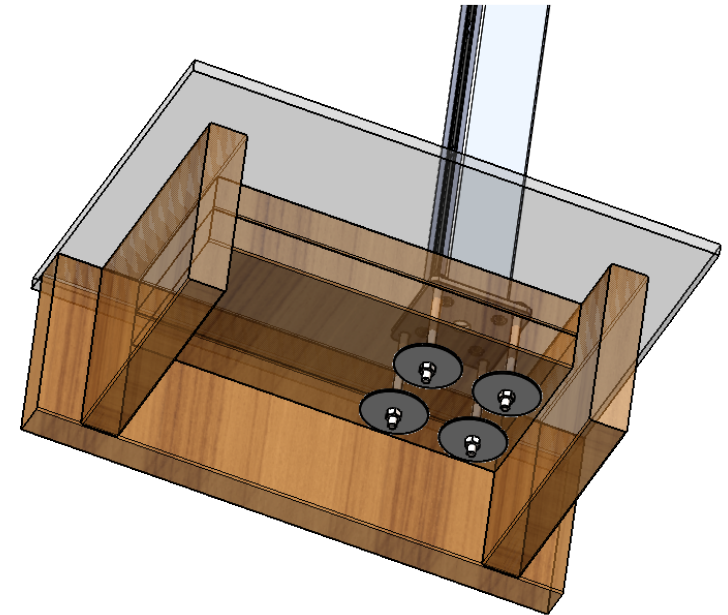
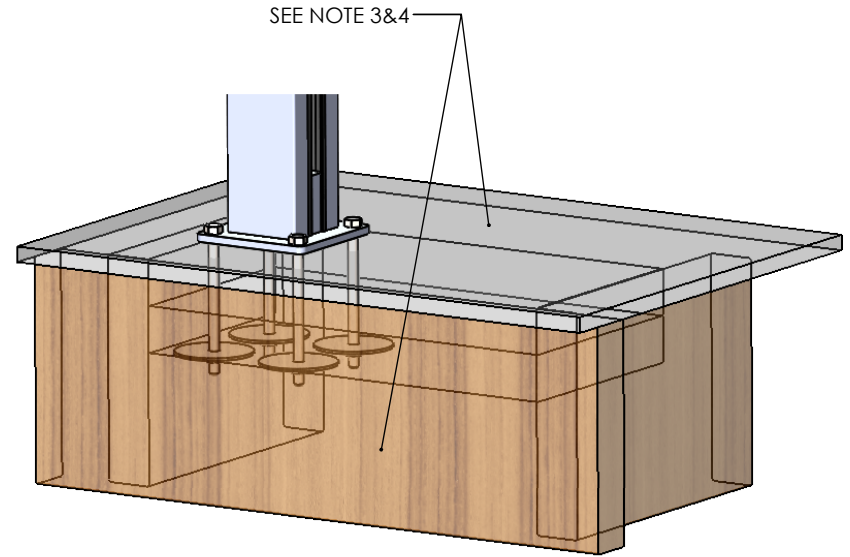
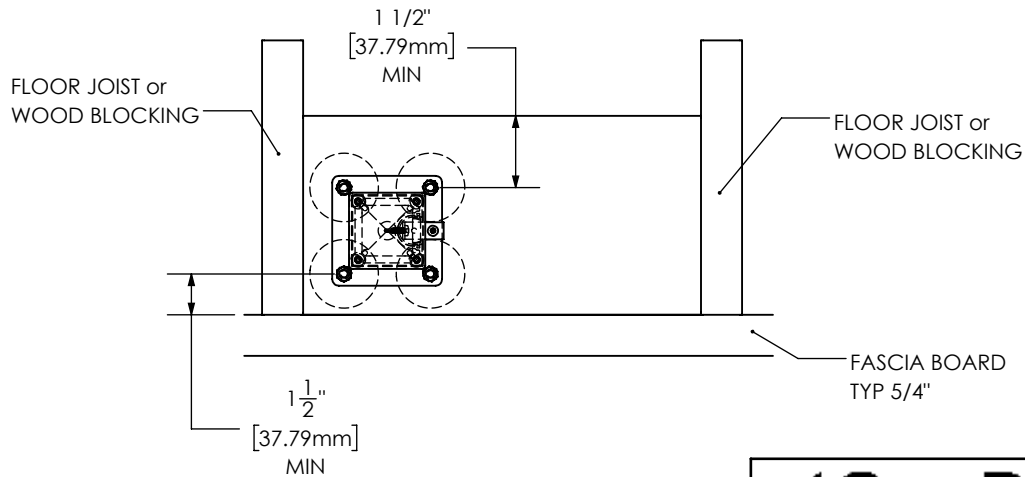
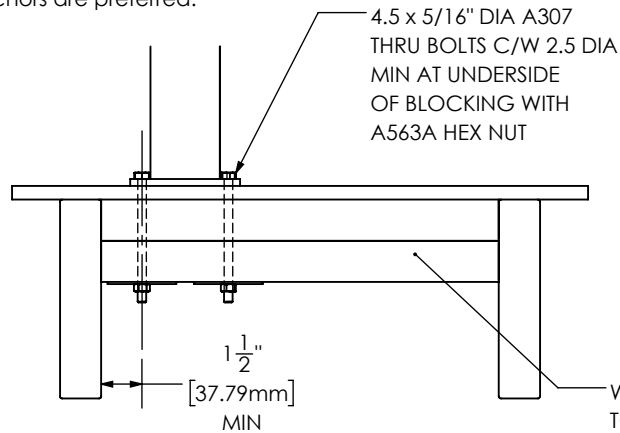


**Fastening Detail General Notes:**

1. Anchors required: 4.5" x 5/16" dia A307 Thru Bolts c/w 2.5" Washer
2. Anchor design complies with part 4 & Part 9 of NBC 2015, BCBC 2018, and OBC 2012.
3. Wood blocking connections to main are responsibility of others
4. Decking shown in drawing is for illustration only and in no way implies how to construct a deck.
5. The design is not applicable to open viewing stands without fixed seats and for means of egress in grandstands, stadia, bleachers and arenas.
6. If installed in coastal regions or in high corrosive areas, stainless steel anchors are preferred.



**CenDek**  
Railings Ltd.

PROPRIETARY AND CONFIDENTIAL

THE INFORMATION CONTAINED IN THIS DRAWING IS THE SOLE PROPERTY OF CENDEK RAILINGS LTD. ANY REPRODUCTION IN PART OR AS A WHOLE WITHOUT THE WRITTEN PERMISSION OF CENDEK RAILINGS LTD IS PROHIBITED.

DRAWN BY	Admin
CREATED	2/26/2024
MATERIAL	
DIE NO.	
ALL DIMENSION IN INCHES/mm	

**DESCRIPTION**  
5ft Privacy Wall - Surface Mount - Fastening Details

Part No. NA	Eng No. 2338AB
Weight 21.59 Lbs	SHEET 2 OF 2 Rev -

**REVISIONS**

REV.	DESCRIPTION	DATE	INITIALS
------	-------------	------	----------