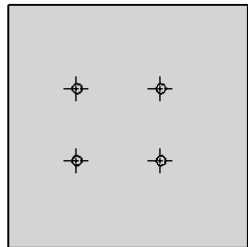
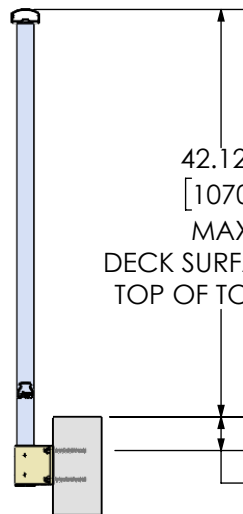


DRILL AND APPLY
SIMPSON SET-3G
HIGH STRENGTH
EPOXY ADHESIVE TO
EACH HOLE

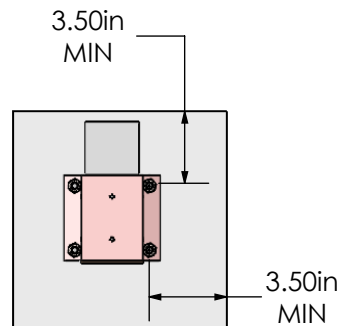
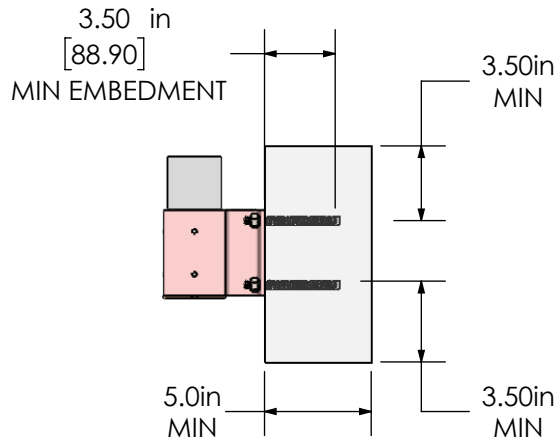


(4) 3/8" w/ 3.5in MIN
EMBEDMENT
F1554 GRADE 36 STEEL
THREADED ROD



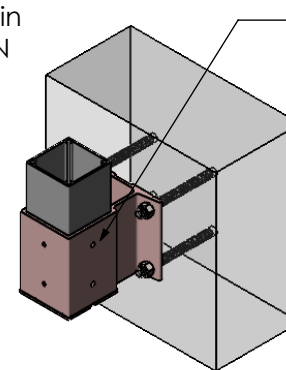
42.126
[1070]
MAX
DECK SURFACE TO
TOP OF TOP RAIL

3.50in
[88.90mm]
MAX

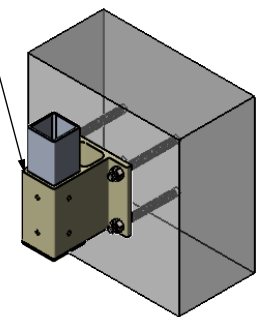


NOTES:

1. Anchors Required:
Simpson SET-3G high strength epoxy adhesive & (4)-
3/8" F1554 Grade 36 Steel Threaded Rod with 3.50in
min embedment.
2. Anchor design complies with part 4 & part 9 of NBC
2015, BCBC 2018, and OBC 2012.
3. Anchor design complies with ANNEX D of CSA A23.3-
14. min 4,000 PSI (27.58 MPA) for crack concrete &
uncracked concrete.
4. Load capacity of main structure and determinations
of cracked or uncracked concrete are the
responsibility of others.
5. Fastening details same for 2.5in & 1.75in post systems.
6. Concrete slab shown in drawing is for illustration only
and in no way implies how to construct concrete.
7. The design is not applicable to open viewing stands
and for means of egress in grandstands, stadia,
bleachers and arenas.
8. If installed in coastal regions or in high corrosive
areas, stainless steel anchors are preferred.



**2-1/2" Post
Fascia Bracket**



**1-3/4" Post
Fascia Bracket**

**Engineered up to a 42-1/8in MAX distance
from surface of deck to top of top rail.**

*Note: Railing System shown may not exactly represent
your system but same fastening detail applies.*



PROPRIETARY AND CONFIDENTIAL

THE INFORMATION CONTAINED IN THIS
DRAWING IS THE SOLE PROPERTY OF
CENDEK RAILINGS LTD. ANY REPRODUCTION IN PART
OR AS A WHOLE WITHOUT THE WRITTEN PERMISSION
OF CENDEK RAILINGS LTD IS PROHIBITED.

| | |
|----------|-----------|
| DRAWN BY | Admin |
| CREATED | 3/22/2018 |
| MATERIAL | |
| DIE NO. | |

ALL DIMENSION IN INCHES/mm

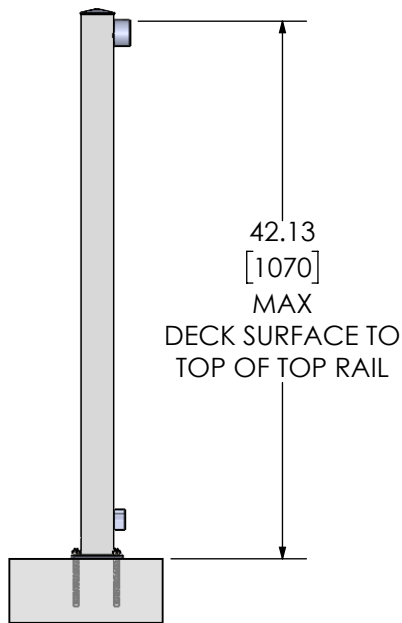
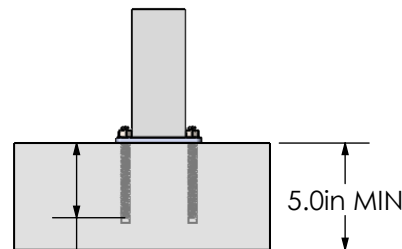
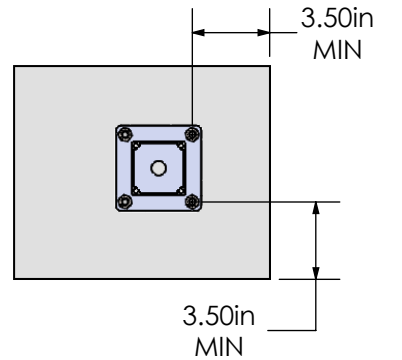
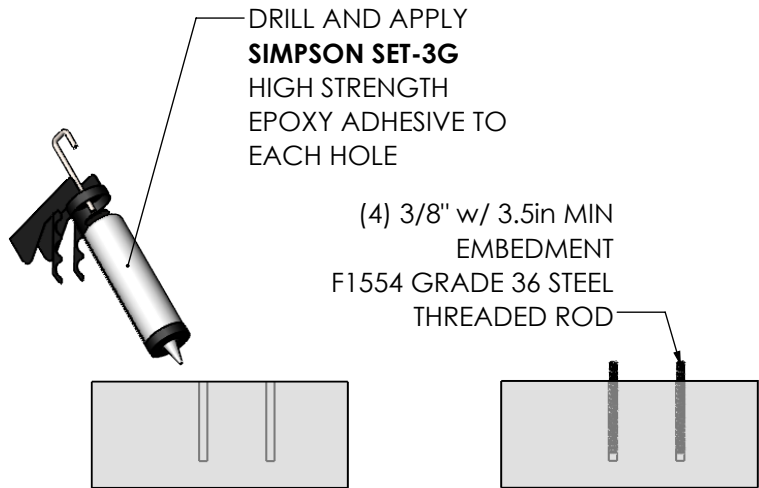
DESCRIPTION

Concrete Adhesive Anchor
Fastening

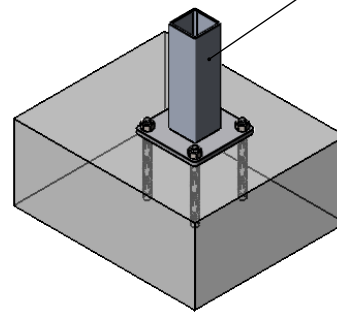
| | |
|-------------------|--------------------|
| Part No. | Eng No. 0517AG |
| Weight 141.15 lbs | SHEET 1 OF 2 Rev I |

REVISIONS

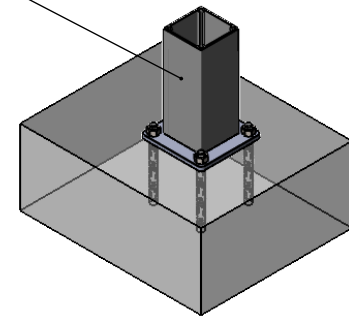
| REV. | DESCRIPTION | DATE | INITIALS |
|------|------------------|-----------|----------|
| 1 | Additional Notes | 2/26/2024 | cc |



3.50in in
[88.90mm]
MIN EMBEDMENT



See note 5



NOTES:

1. Anchors Required:
Simpson SET-3G high strength epoxy adhesive & (4)-3/8" F1554 Grade 36 Steel Threaded Rod with 3.50in min embedment.
2. Anchor design complies with part 4 & part 9 of NBC 2015, BCBC 2018, and OBC 2012.
3. Anchor design complies with ANNEX D of CSA A23.3-14. min 4,000 PSI (27.6 MPA) for crack concrete & uncracked concrete.
4. Load capacity of main structure and determinations of cracked or uncracked concrete are the responsibility of others.
5. Fastening details same for 2.5in & 1.75in post systems.
6. Concrete slab shown in drawing is for illustration only and in no way implies how to construct concrete.
7. The design is not applicable to open viewing stands and for means of egress in grandstands, stadia, bleachers and arenas.
8. If installed in coastal regions or in high corrosive areas, stainless steel anchors are preferred.



**Engineered up to a 42-1/8in MAX distance
from surface of deck to top of top rail.**
*Note: Railing System shown may not exactly represent
your system but same fastening detail applies.*

CenDek
Railings Ltd.

PROPRIETARY AND CONFIDENTIAL

THE INFORMATION CONTAINED IN THIS
DRAWING IS THE SOLE PROPERTY OF
CENDEK RAILINGS LTD. ANY REPRODUCTION IN PART
OR AS A WHOLE WITHOUT THE WRITTEN PERMISSION
OF CENDEK RAILINGS LTD IS PROHIBITED.

| | |
|----------------------------|-----------|
| DRAWN BY | Admin |
| CREATED | 3/22/2018 |
| MATERIAL | |
| DIE NO. | |
| ALL DIMENSION IN INCHES/mm | |

DESCRIPTION
Concrete Adhesive Anchor
Fastening

| | |
|-------------------|--------------------|
| Part No. | Eng No. 0517AG |
| Weight 141.15 lbs | SHEET 2 OF 2 Rev I |